

Technical drawing of a window frame cross-section showing dimensions for frame size, visible glass, and various components.

Dimensions:

- Frame Size: 4 1/16" [103.0]
- Visible Glass: 5 3/8" [136.0]
- Top Sash: 1 1/4" [32.0]
- Bottom Sash: 2 11/16" [68.0]
- Bottom Sash Width: 3/4" [19.0]
- Bottom Sash Height: 1 3/4" [44.3]
- Bottom Sash Width (Bottom): 3 11/16" [93.2]
- Bottom Sash Height (Bottom): 1 1/4" [31.7]
- Bottom Sash Width (Bottom): 7"

Technical drawings of two window frame cross-sections, labeled 'A' and 'B'.

Drawing A: Shows a frame with a visible glass pane. Dimensions include:

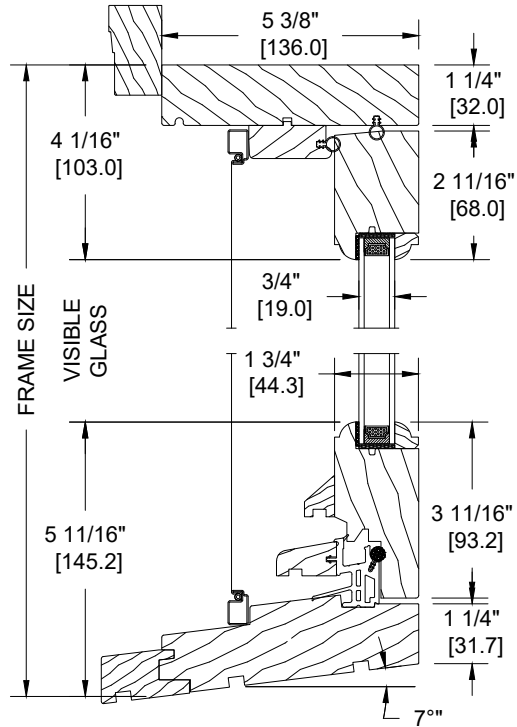
- Top left: 1 1/4" [32.0]
- Top center: 2 11/16" [68.0]
- Left side: 5 3/8" [136.0]
- Bottom left: 4 1/16" [102.5]
- Bottom center: 4 1/16" [102.5]
- Bottom right: 4 1/16" [102.5]
- Bottom center label: VISIBLE GLASS
- Bottom center label: FRAME SIZE

Drawing B: Shows a frame without a visible glass pane. Dimensions include:

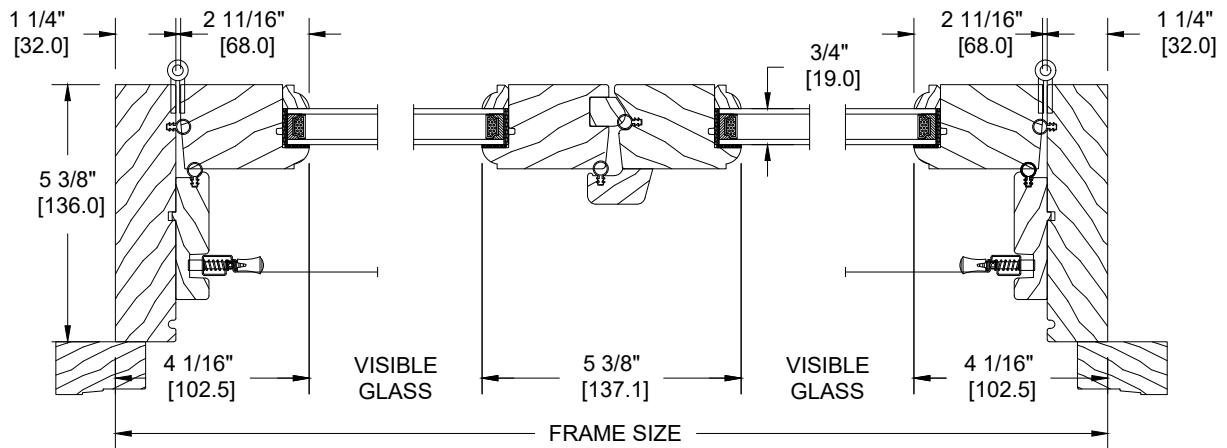
- Top center: 2 11/16" [68.0]
- Top right: 1 1/4" [32.0]
- Bottom left: 4 1/16" [102.5]
- Bottom right: 4 1/16" [102.5]

LEPAGE
MILLWORK

WOOD 1 3/4" SASH INSWING FRENCH CASEMENT WINDOW WITH
908 BRICKMOULD CASING STANDARD SILL NOSING

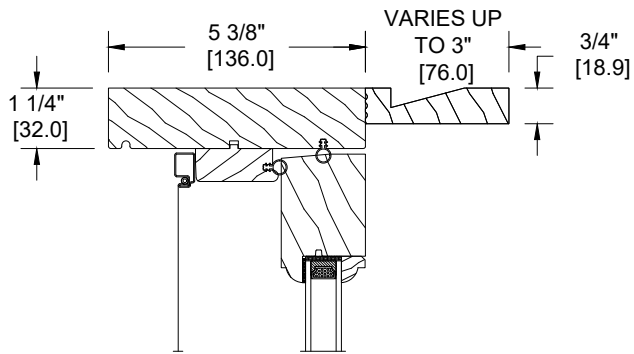


VERTICAL SECTION
OPERATING UNIT

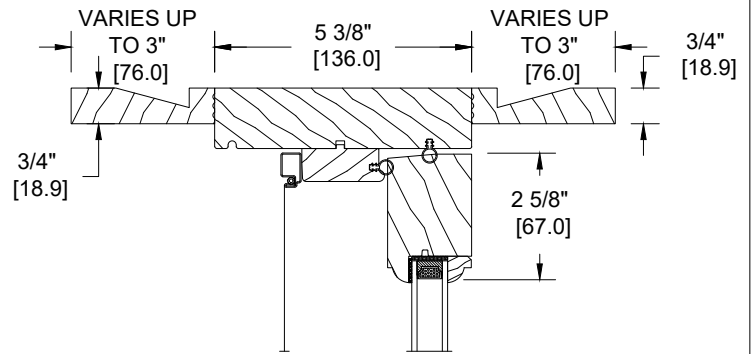


HORIZONTAL SECTION
2-WIDE OPERATING UNIT

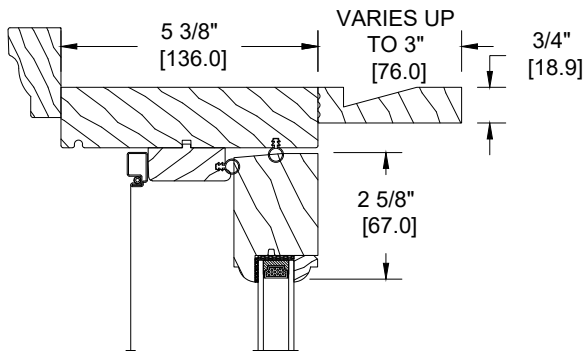
WOOD 1 3/4" SASH INSWING FRENCH CASEMENT WINDOW HEAD JAMB OPTIONS



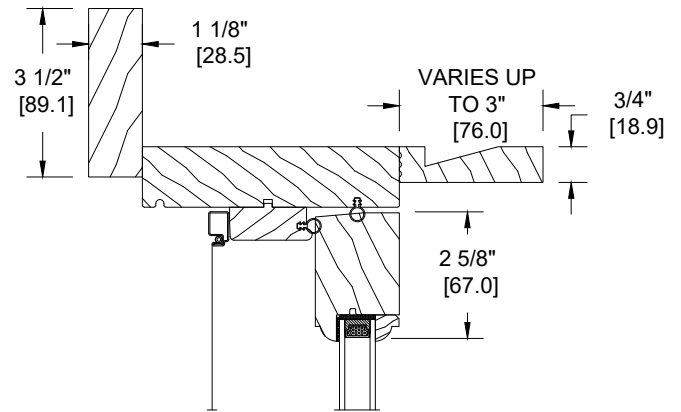
FLUSH 1" EXTERIOR EXTENSION



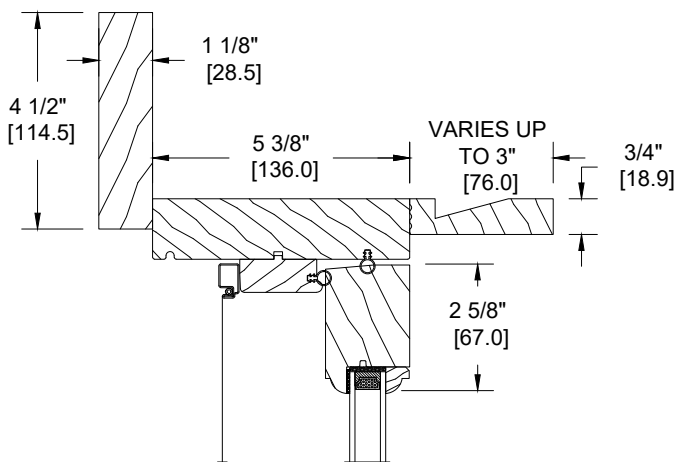
FLUSH UP TO 3"
EXTERIOR EXTENSION



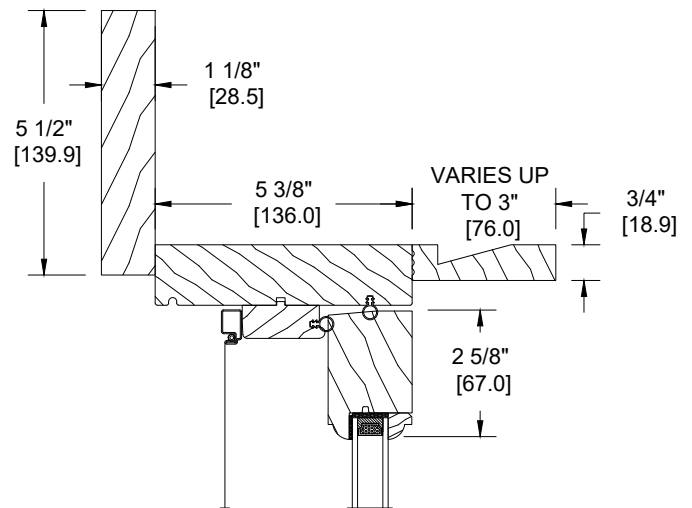
COLONIAL EXTERIOR BRICKMOULD



5/4 X 3 1/2" FLAT CASING

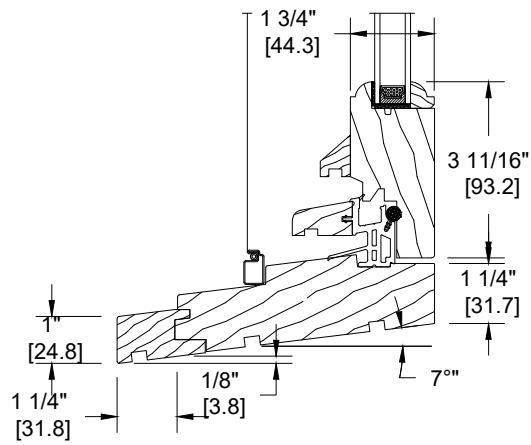


5/4 X 4 1/2" FLAT CASING

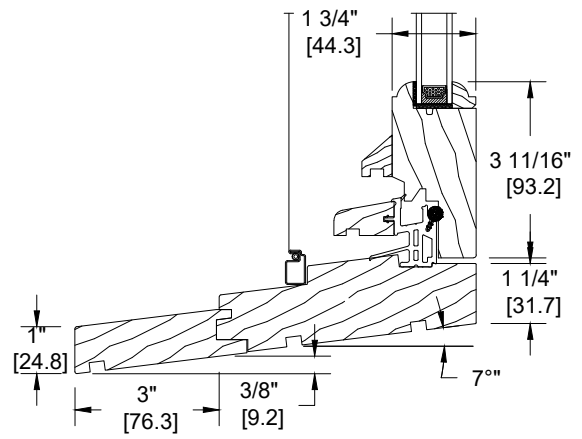


5/4 X 5 1/2" FLAT CASING

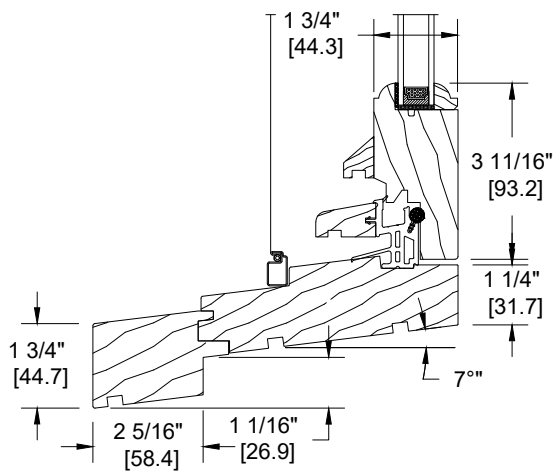
WOOD 1 3/4" SASH INSWING FRENCH CASEMENT WINDOW SILL NOSING OPTIONS



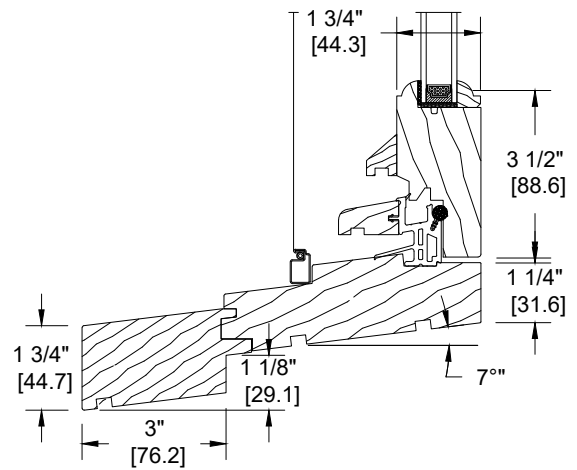
STANDARD 1 1/4" [32] SILL NOSING



OPTIONAL 3" [76] SILL NOSING

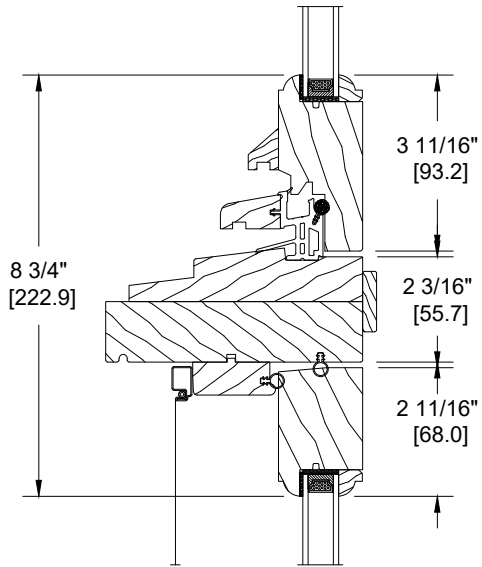


OPTIONAL HISTORIC SILL NOSING

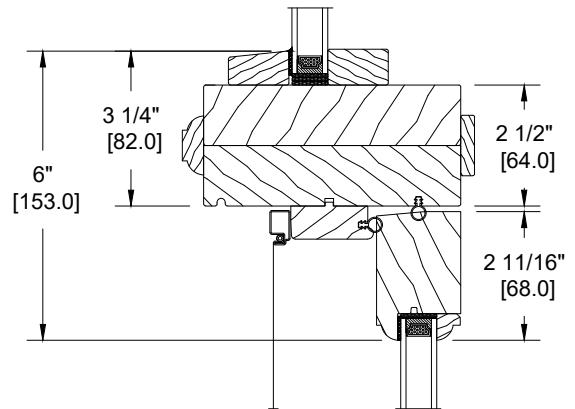


OPTIONAL SUPER HISTORIC
SILL NOSING

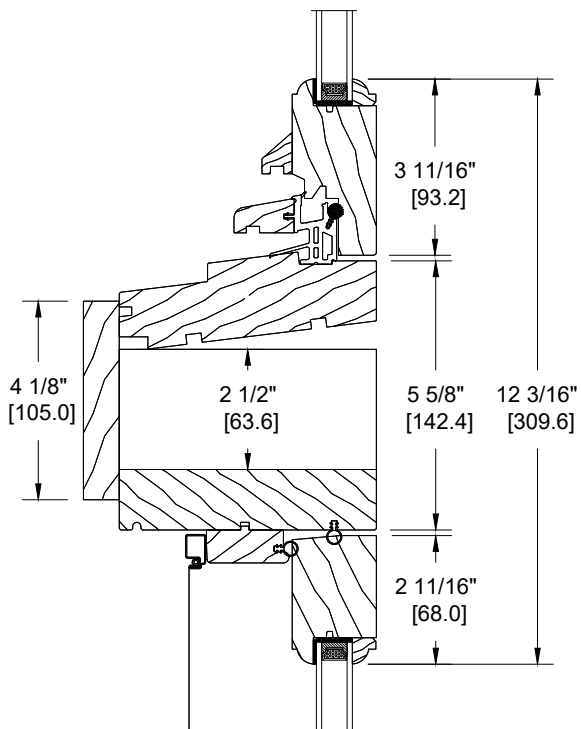
WOOD 1 3/4" SASH INSWING FRENCH CASEMENT WINDOW
HORIZONTAL MULLING OPTIONS



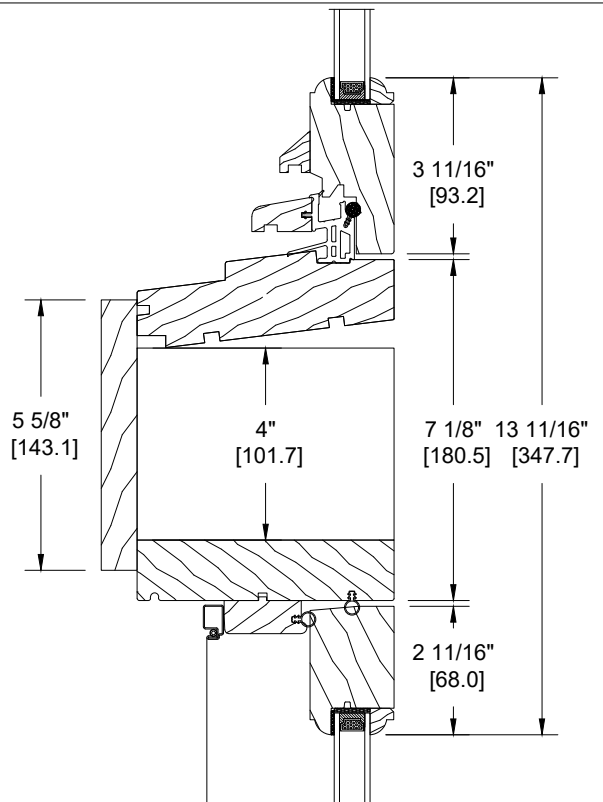
HORIZONTAL
FIXED OVER OPERATING
TIGHT MULL



HORIZONTAL
DIRECT SET OVER
OPERATING TIGHT MULL

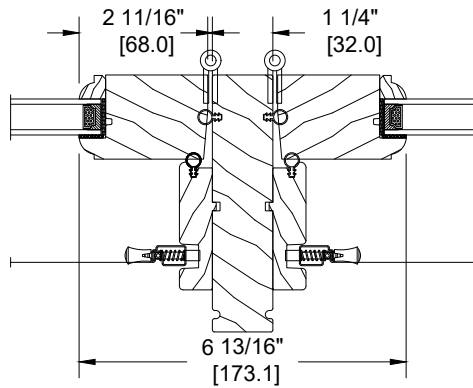


HORIZONTAL
2 1/2" [64] SPACE MULL OR STUD POCKET

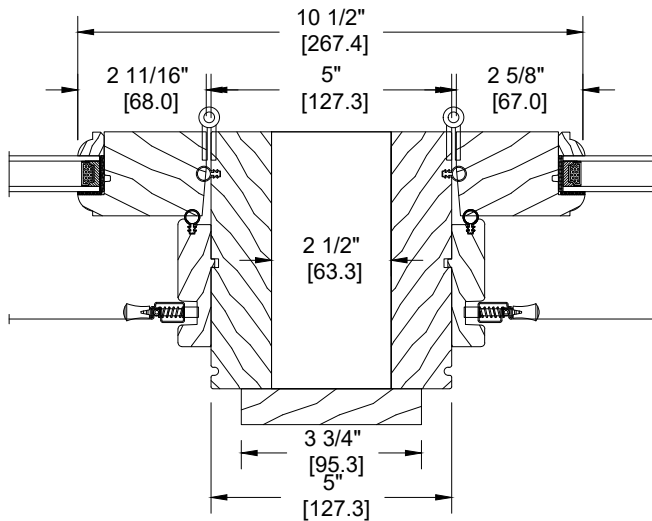


HORIZONTAL
4" [102] SPACE MULL
OR STUD POCKET

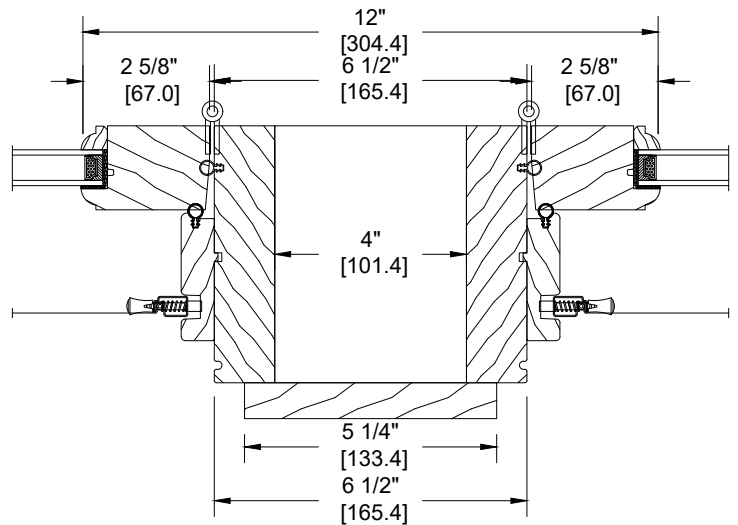
WOOD 1 3/4" SASH INSWING FRENCH CASEMENT WINDOW
VERTICAL MULLING OPTIONS



VERTICAL
2-WIDE OPERATING STANDARD STRUCTURAL MULL

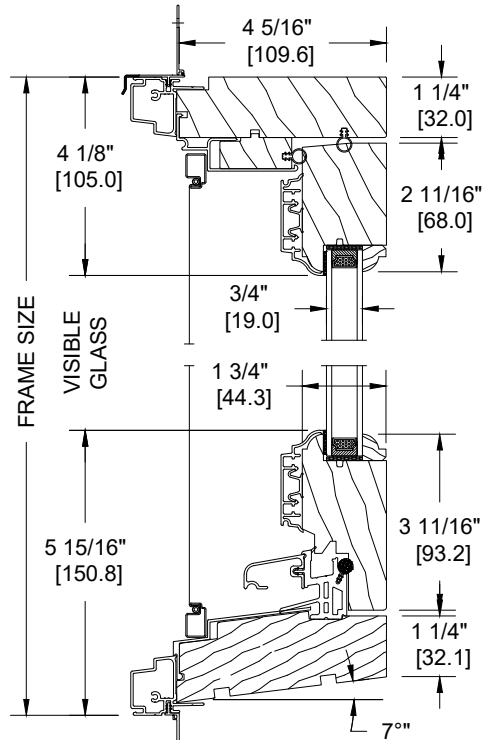


VERTICAL
2 1/2" [64] SPACE MULL OR STUD POCKET

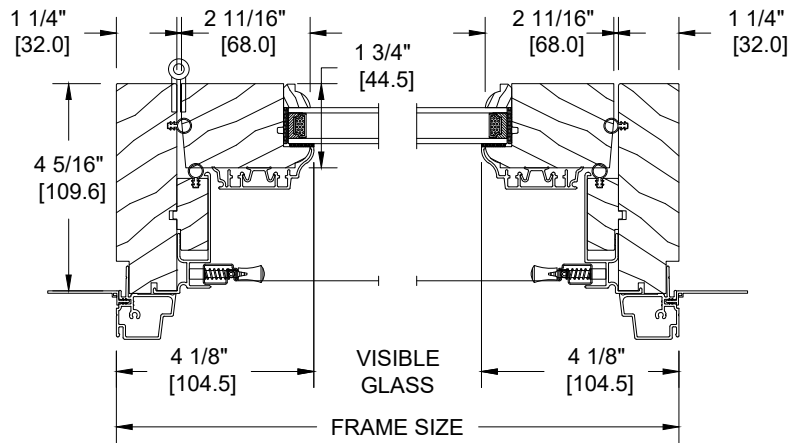


VERTICAL
4" [64] SPACE MULL
OR STUD POCKET

ALUMINIUM CLAD 1 3/4" SASH INSWING FRENCH CASEMENT WINDOW WITH
4 3/8" FRAME, VINYL NAILING FIN AND NO SILL NOSING

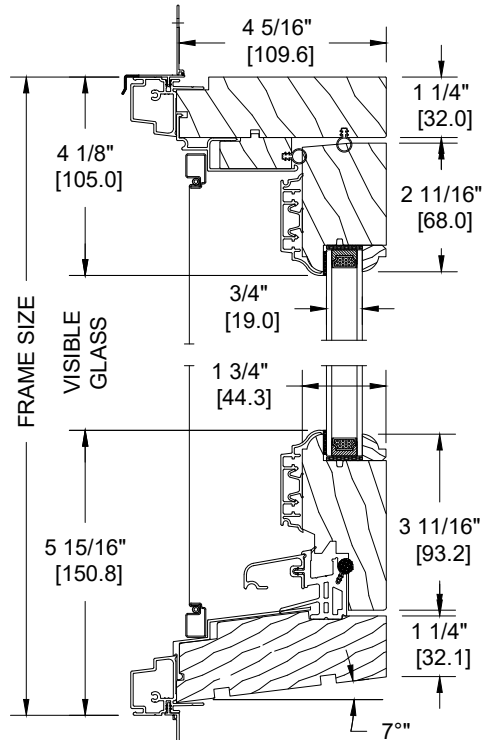


VERTICAL SECTION
OPERATING UNIT

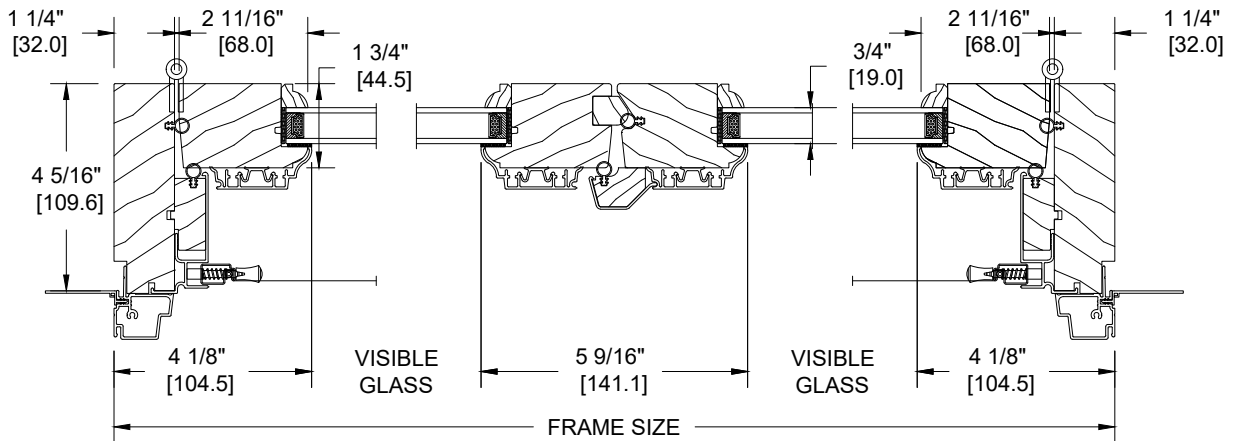


HORIZONTAL SECTION
1-WIDE OPERATION UNIT

ALUMINIUM CLAD 1 3/4" SASH INSWING FRENCH CASEMENT WINDOW WITH
4 3/8" FRAME, VINYL NAILING FIN AND NO SILL NOSING

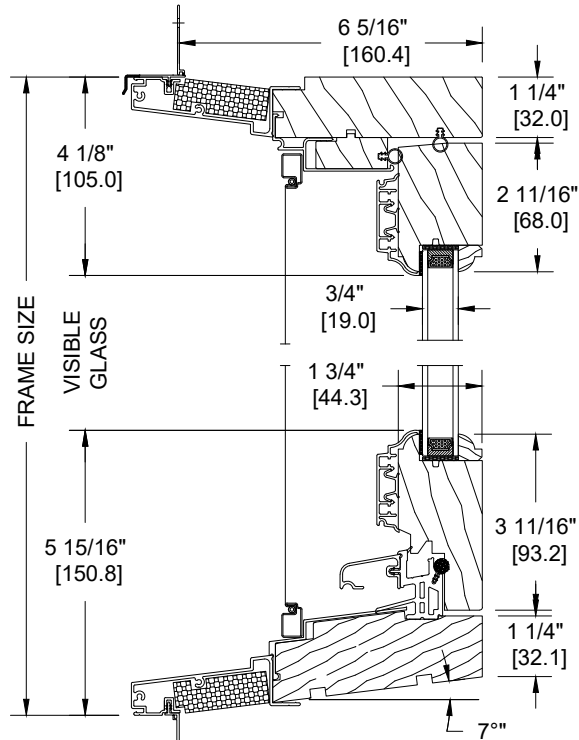


VERTICAL SECTION
OPERATING UNIT

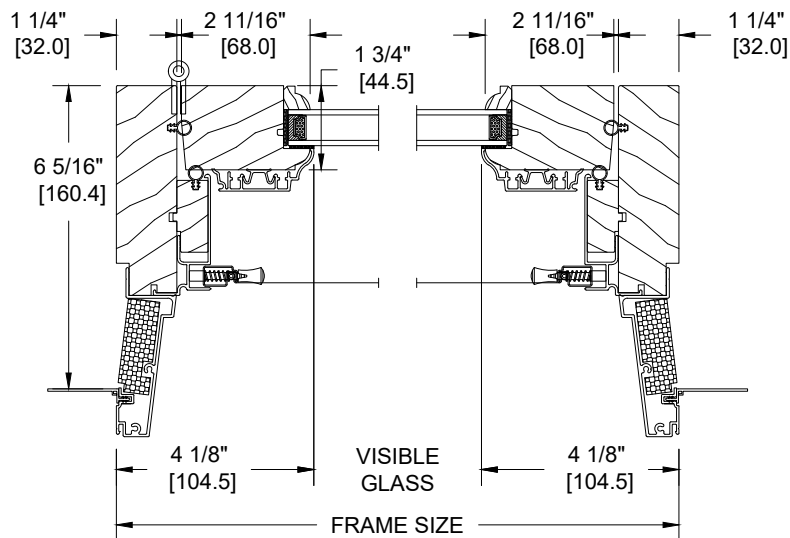


HORIZONTAL SECTION
2-WIDE OPERATING UNIT

ALUMINIUM CLAD 1 3/4" SASH INSWING FRENCH CASEMENT WINDOW WITH
6 3/8" FRAME, VINYL NAILING FIN AND NO SILL NOSING

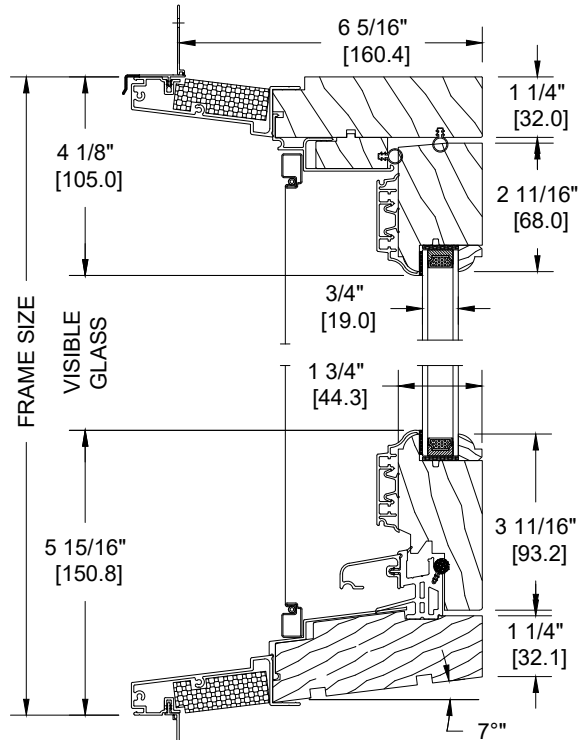


VERTICAL SECTION
OPERATING UNIT

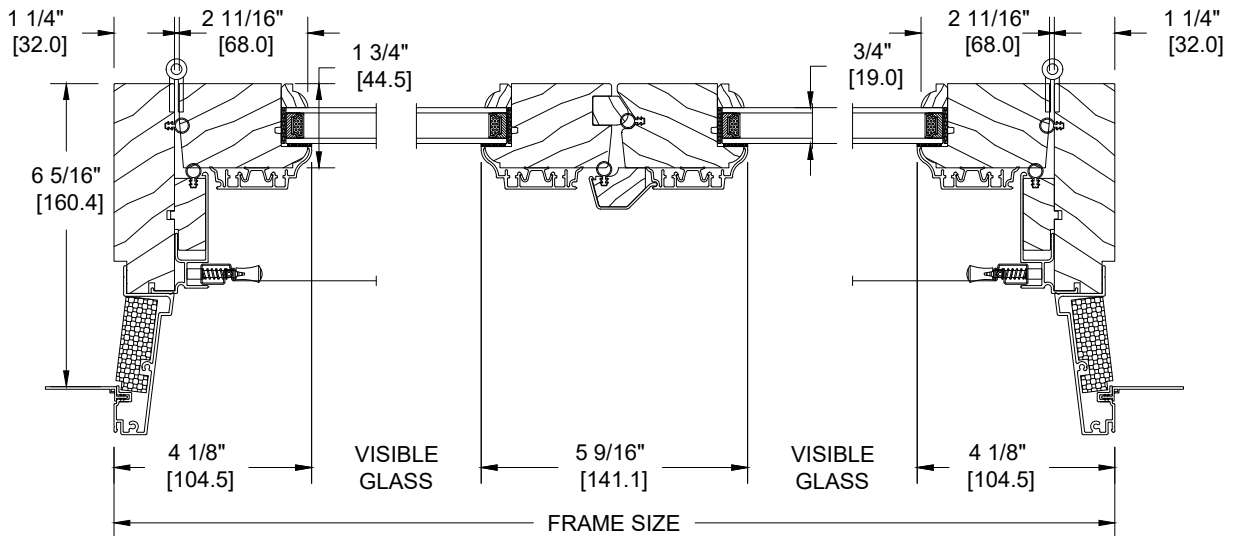


HORIZONTAL SECTION
1-WIDE OPERATION UNIT

ALUMINIUM CLAD 1 3/4" SASH INSWING FRENCH CASEMENT WINDOW WITH
6 3/8" FRAME, VINYL NAILING FIN AND NO SILL NOSING

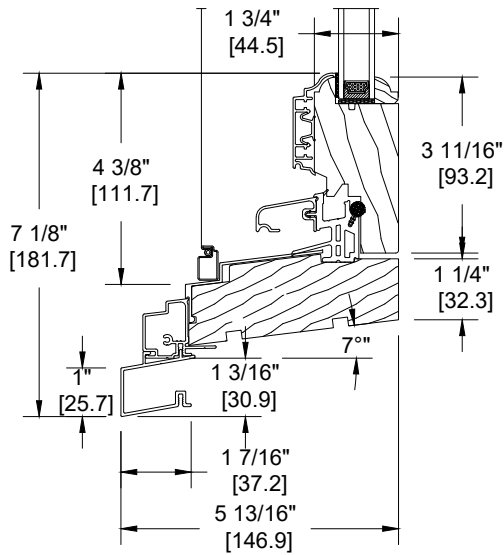


VERTICAL SECTION
OPERATING UNIT

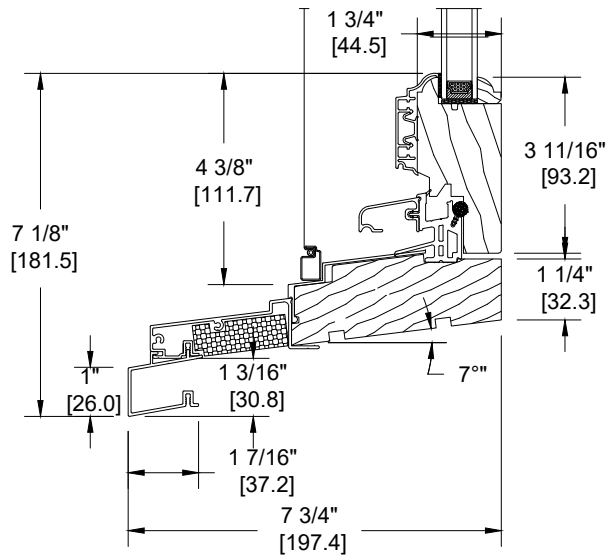


HORIZONTAL SECTION
2-WIDE OPERATING UNIT

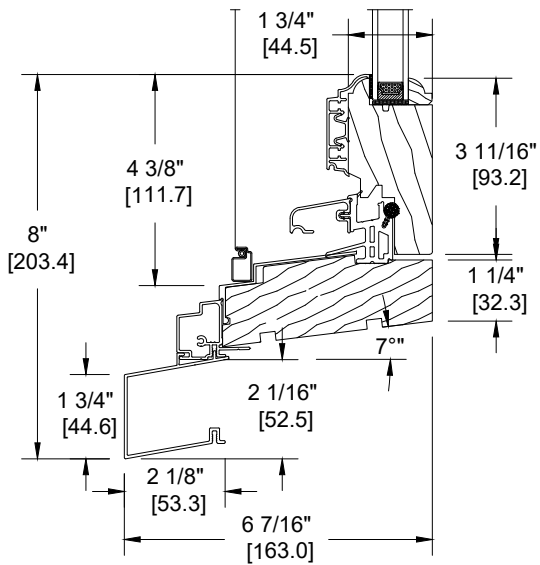
ALUMINIUM CLAD 1 3/4" SASH INSWING FRENCH CASEMENT WINDOW
SILL OPTIONS



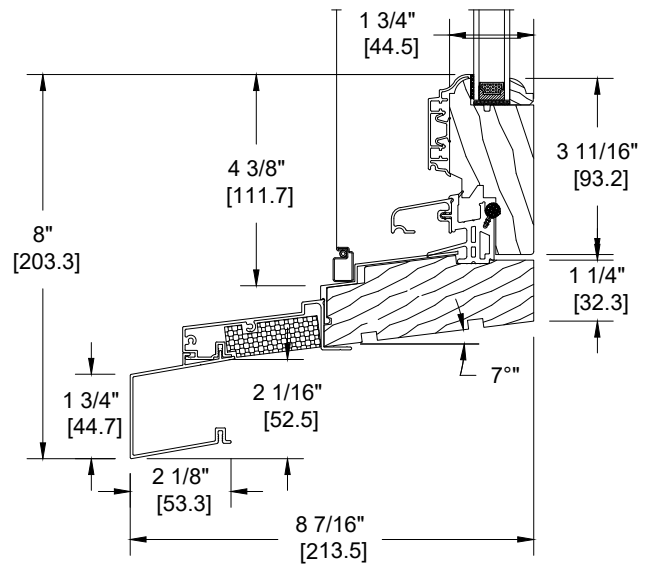
4 3/8" FRAME WITH EXTRUDED
ALUMINUM 1 1/4" SILL NOSING



6 3/8" FRAME WITH EXTRUDED
ALUMINUM 1 1/4" SILL NOSING

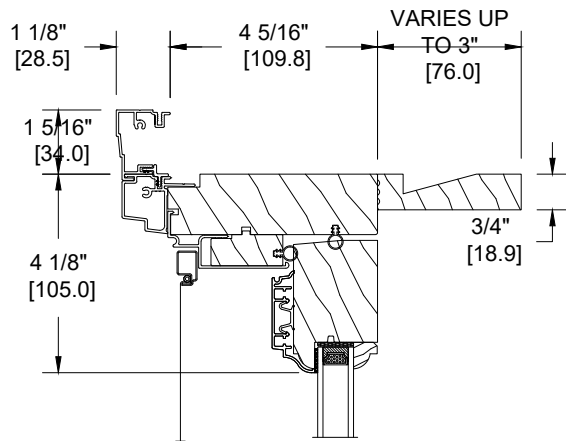


4 3/8" FRAME WITH EXTRUDED
ALUMINUM HISTORIC SILL NOSING

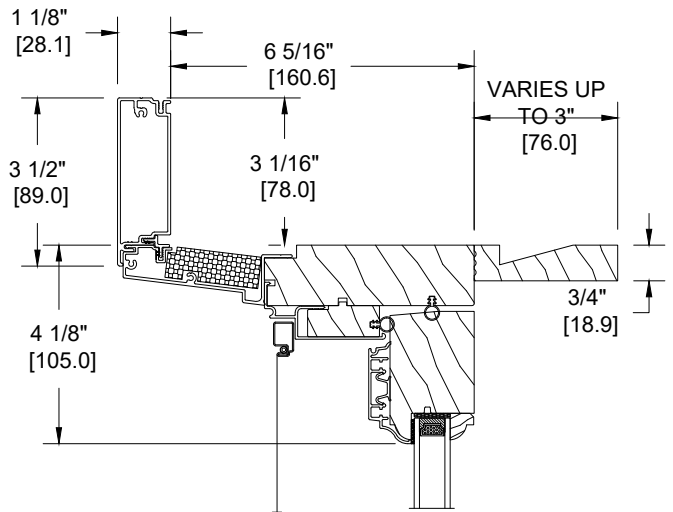


6 3/8" FRAME WITH EXTRUDED
ALUMINUM HISTORIC SILL NOSING

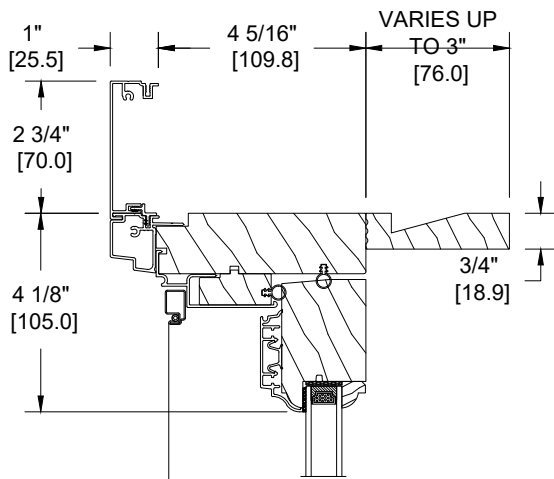
ALUMINIUM CLAD 1 3/4" SASH INSWING FRENCH CASEMENT WINDOW
HEAD JAMB OPTIONS



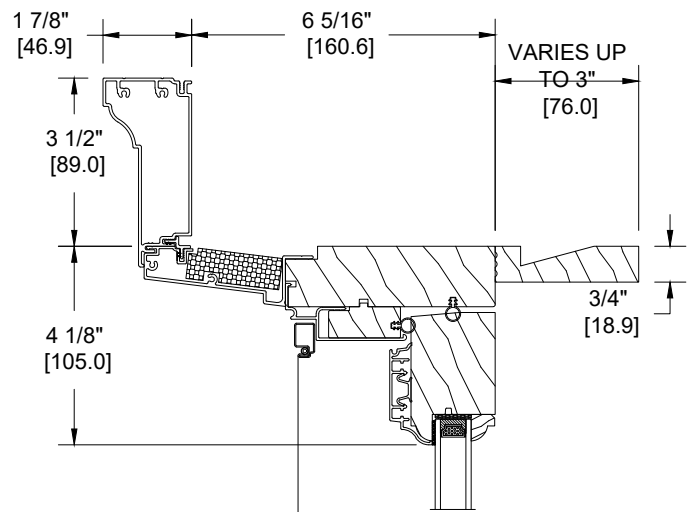
4 3/8" FRAME WITH
EXTRUDED ALUMINUM BMC



6 3/8" FRAME WITH
3 1/2" EXTRUDED ALUMINUM FLAT CASING (D-050)

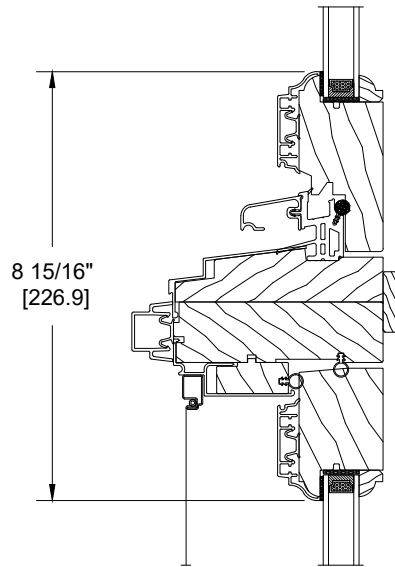


4 3/8" FRAME WITH
2 3/4" EXTRUDED ALUMINUM FLAT CASING

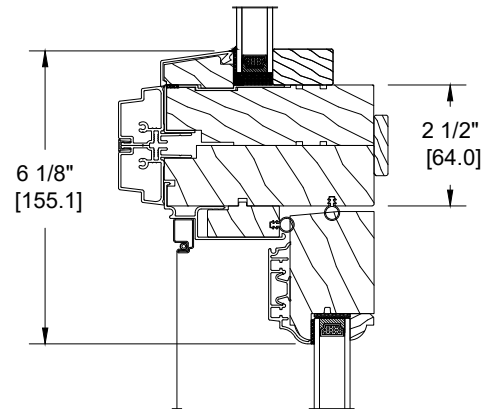


6 3/8" FRAME WITH
3 15/16" EXTRUDED ALUMINUM BACKBEND CASING
(D-090)

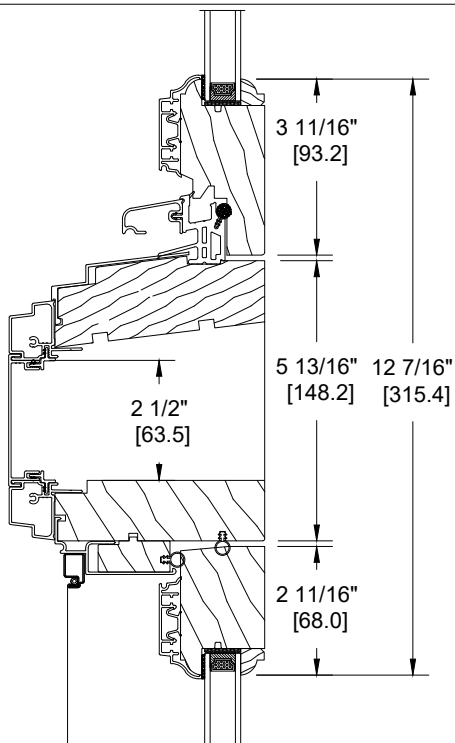
ALUMINIUM CLAD 1 3/4" SASH INSWING FRENCH CASEMENT WINDOW
HORIZONTAL MULLING OPTIONS



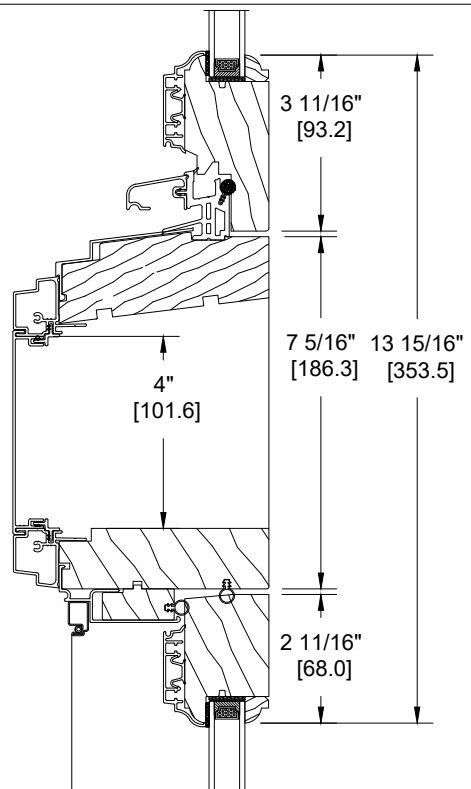
HORIZONTAL
FIXED OVER OPERATING
TIGHT MULL



HORIZONTAL
DIRECT SET OVER OPERATING
TIGHT MULL

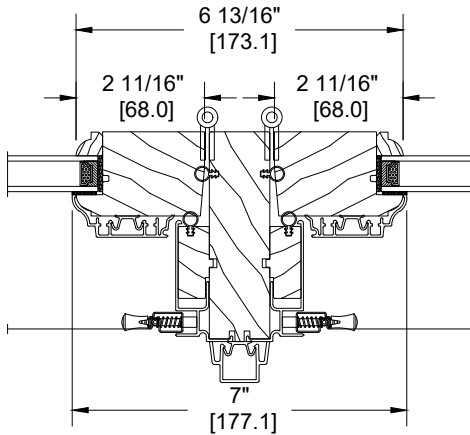


HORIZONTAL
2 1/2" [64] SPACE MULL OR STUD POCKET

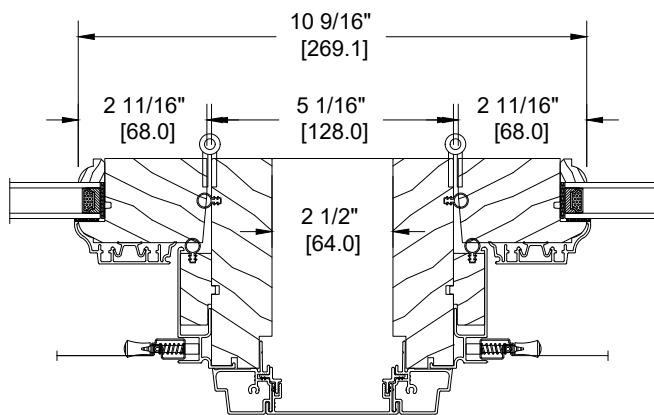


HORIZONTAL
4" [102] SPACE MULL
OR STUD POCKET

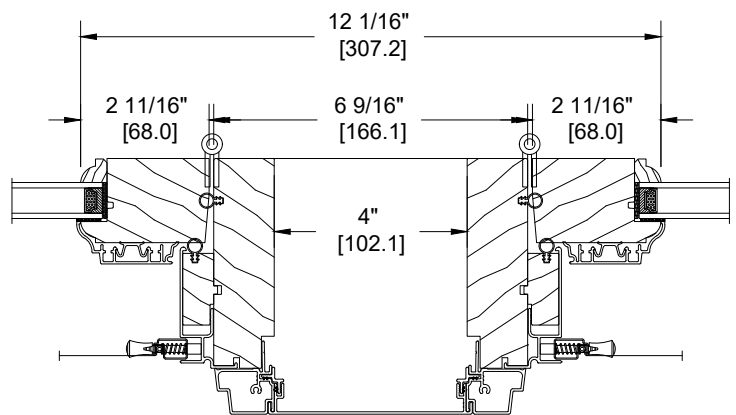
ALUMINIUM CLAD 1 3/4" SASH INSWING FRENCH CASEMENT WINDOW
VERTICAL MULLING OPTIONS



VERTICAL
2-WIDE OPERATING STANDARD STRUCTURAL MULL

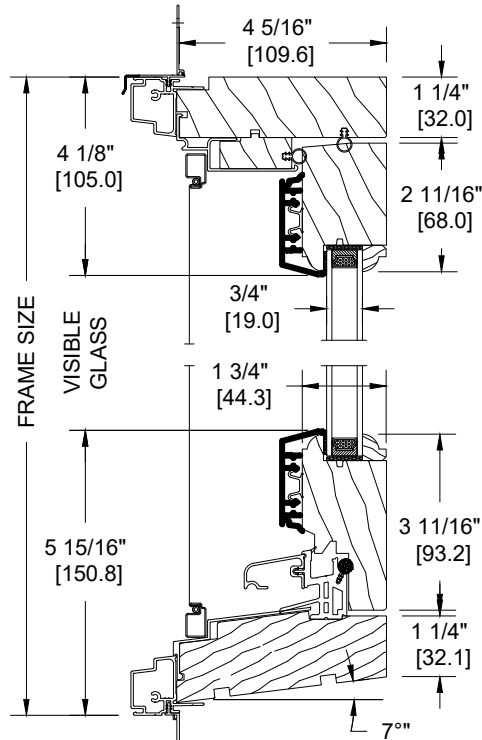


VERTICAL
2 1/2" [64] SPACE MULL OR STUD POCKET

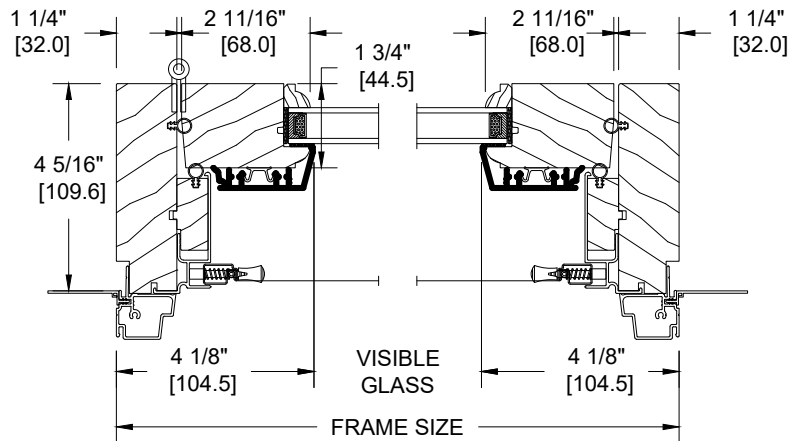


VERTICAL
4" [64] SPACE MULL OR STUD POCKET

ALUMINIUM CLAD 1 3/4" SASH INSWING FRENCH CASEMENT WINDOW WITH
4 3/8" FRAME, VINYL NAILING FIN AND NO SILL NOSING - CONTEMPORAIN SASH OPTION



VERTICAL SECTION
OPERATING UNIT



HORIZONTAL SECTION
1-WIDE OPERATION UNIT