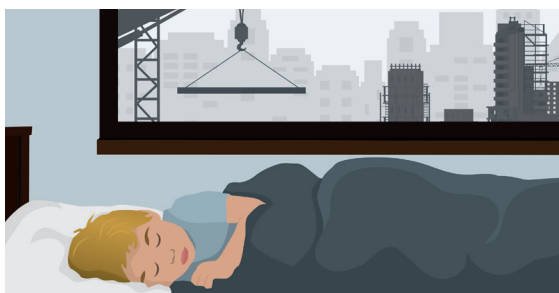




HELP ME CHOOSE - ACOUSTIC GLASS

The STC and OITC rating measures a window's ability to block sound transmission. Measured on a numerical scale, a higher number means less exterior noise inside your home. Lepage offers a variety of acoustic glass with high ratings.



The sound attenuation properties of a glazing type will be achieved with the plastic interlayer absorption of sound transmission of a laminated glass or else with the isolating air space of an insulated glass. The combination of a laminated glass assembled in an insulated unit will maximize the results in reducing sound transmission. By integrating laminated glass in your design, that glass pane in itself will contribute to 4 points gain on your results. The best performances can be achieved with our wide range of compositions **Acoustic**, **Acoustic Plus** or **Acoustic Performance**.

WOOD PRODUCTS

> 1 3/4" SASH

I.G.	Composition	I.G. Thickness	STC*	OITC*
Double Std I.G.	2 glass of 3 mm	19 mm [3/4"]	29	24
I.G. with single laminated glass	Laminated: 3mm - 0.030 pvb - 3mm + 3mm	19 mm [3/4"]	33	28
Double I.G. Acoustic Std	4 mm + 6 mm	19 mm [3/4"]	36	27



> 2¼" SASH

Thermos	Composition	I.G. Thickness	STC*	OITC*
Double Std I.G.	2 glass of 3 mm	19 mm [$\frac{3}{4}$ "	29	24
Triple Std I.G.	3 glass of 3 mm	32 mm [$1\frac{1}{4}$ "	30	25
I.G. with double laminated glass	3mm - 0.030 pvb - 3mm + 3mm - 0.060 pvb - 3mm	31 mm [$1\frac{1}{4}$ "	33	25
Double I.G. Acoustic Std	4mm + 6 mm	22 mm [$\frac{3}{4}$ "	36	27
Double I.G. Acoustic +	4mm + 6 mm	28 mm [$1\frac{1}{8}$ "	37	28
I.G. with single laminated Acoustic Performance	3mm - 0.030 pvb - 3mm + 4 mm**	30 mm [$1\frac{3}{16}$ "	38	28

> PVC PRODUCTS

I.G.	Composition	I.G. Thickness	STC*	OITC*
Double Std I.G.	2 glass of 3 mm	19 mm [$\frac{3}{4}$ "	29	24
Triple Std I.G.	3 glass of 3 mm	32 mm [$1\frac{1}{4}$ "	30	25
I.G. with double laminated glass	3 mm - 0.030 pvb - 3mm + 3 mm - 0.060 pvb - 3 mm	31 mm [$1\frac{1}{4}$ "	33	25
Double I.G. Acoustic Std	4 mm + 6 mm	22 mm [$\frac{3}{4}$ "	36	27
I.G. with single laminated Acoustic Performance	3 mm - 0.030 pvb - 3 mm + 4 mm**	30 mm [$1\frac{3}{16}$ "	38	28

* Values for insulated glass units only.

** The laminated glass position will be dependent of the type of low-e used.

SOUNDPROOFING INFORMATION

- 1 - Low-e coatings do not affect STC or OITC.
- 2 - Compression closure products (i.e.: casement, hinged door) are better for soundproofing than sliding products (i.e.: double hung, patio door).
- 3 - A standard building wall construction has a STC of 34 to 38. It is therefore irrelevant to have a higher STC if nothing is done to improve the wall.